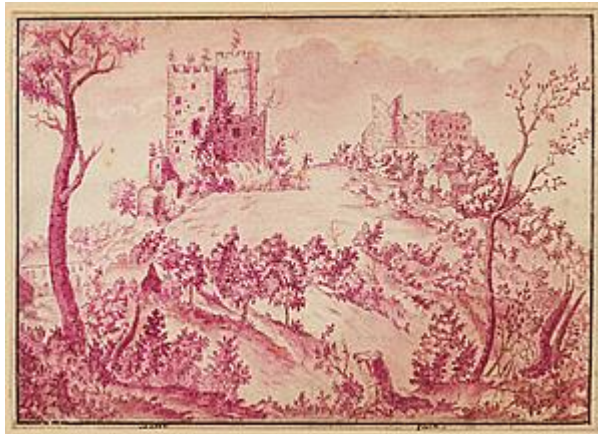


# STEPHEN ONGPIN FINE ART



**Early 17th century Northern School (1600 - 1650)**

## **Landscape with a Castle on a Hill**

Pen and brown ink and violet wash, with framing lines in black ink.

Inscribed Scoffer and gall(?) in the lower margin.

106 x 147 mm. (4 3/8 x 5 3/4 in.)