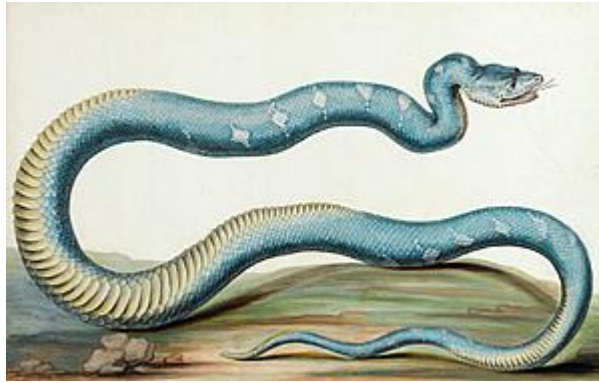


STEPHEN ONGPIN FINE ART



18th Century FRENCH SCHOOL

An Emerald Tree Boa

Gouache on fine vellum, over traces of black chalk, within a gold border. Laid down on board.

234 x 370 mm. (9 1/4 x 14 5/8 in.) [image]

273 x 408 mm. (10 3/4 x 16 in.) [sheet]

The present sheet may be tentatively related to the series of natural history drawings known as the *Vélins du Roi*, commissioned from various artists for the French Royal Collection. The collection has its origins in the 17th century and the draughtsman Nicolas Robert (1614-1685), the most famous natural history artist of the day in France, who was particularly renowned for his watercolours of flowers, plants and birds, drawn on vellum. Robert came to the attention of Gaston, Duc d'Orléans, a devoted botanist whose garden at his château at Blois included several rare varieties of plants. Robert was commissioned to make watercolours of some of these, as well as others of animals and birds. Drawn on fine vellum, these exquisite drawings by Robert formed a major part of the five large folio volumes of *vélins* in Gaston d'Orléans's collection at the time of his death in 1660. The collection passed to Gaston's nephew, Louis XIV.

Under the King's patronage, the commissioning of works to add to the collection, now known as the *Vélins du Roi*, was continued, and in 1666 Robert was appointed *peintre ordinaire du Roi pour la miniature*. His contract called for a minimum number of fifty-four *vélins* to be executed by Robert and his workshop for the *Vélins du Roi* each year. Botanical subjects were taken from the *Jardin Royale* in Paris, and the exotic species of birds and animals from the *Ménagerie* at Versailles. The practice of commissioning additions to the *Vélins du Roi* continued well into the 18th century, involving such artists as Gerard van Spaendonck and Pierre-Joseph Redouté.

The *Vélins du Roi* can be identified by the fine quality of the vellum used and the gold borders framing the composition; each *peintre du roi* had his drawings mounted with his own distinctive gold border. However, while the *vélins* in the Royal collection have at best only cursory backgrounds, the presence of a highly finished landscape in this superb study of a snake suggests that it was intended for a private patron.

The snake depicted in this gouache would appear to be an emerald tree boa (*Corallus caninus*), native to South America. Its appearance is characterized by a greenish colouring, yellow belly and white irregular diamond or zigzag shapes down its back.