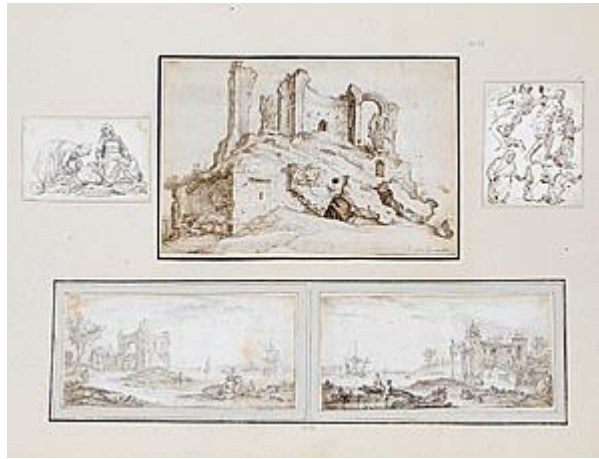


STEPHEN ONGPIN FINE ART



17th Century Dutch School

An Album Page with Five Drawings: A Ruined Temple, after Matthijs Bril; Two Peasant Women with Vegetables; Studies of Four Figures, a Child and a Horse; Coastal Landscape with a Ruined Tower; Coastal Landscape with a Villa and Gardens

Main drawing:

Pen and brown ink.

Inscribed h. van Swanevelt at the lower right and numbered no.33 at the upper right of the backing sheet.

Further inscribed tekening van Swanevelt / 4 Schellingen on the verso.

165 x 248 mm. (6 1/2 x 9 3/4 in.)

The central drawing in this group, at the upper centre of the album page, is copied after a pen and ink drawing by Matthijs Bril the Younger (1550-1583) in the Louvre. Bril's drawing depicts a ruined Roman fountain flanked by two marble trophies, which remained in situ until they were transferred to the Campidoglio in 1590.

After Matthijs Bril's death in 1583, his brother Paul kept many of his drawings of Roman views, and often allowed them to be copied by the younger generation of Northern artists working in the city, such as Willem van Nieulandt and Jan Brueghel. The present sheet bears an attribution to Herman van Swanevelt (1603-1655), who lived and worked in Rome for several years between 1629 and 1641.