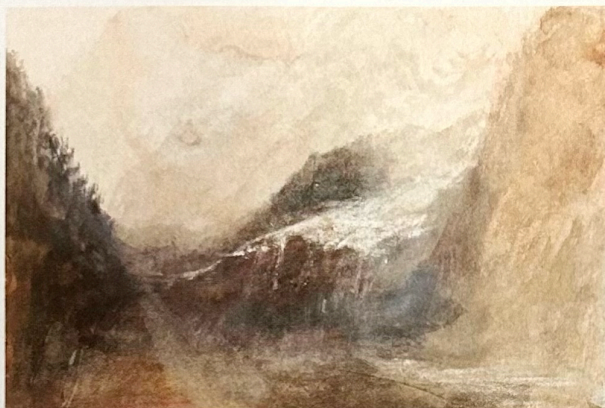


# JMW to buy or just to look

A number of dealers are marking JMW Turner's 250th anniversary by offering works by the artist at exhibitions this summer. Here is a selection

**Right:** *The Brenva Glacier from Notre Dame de la Guerison, above Courmayeur, Val d'Aosta*, a 7½ x 12in (19 x 30cm) watercolour with scratching out. It is priced in the region of £250,000-350,000 by Colnaghi Elliott Master Drawings.



## Colnaghi Elliott Master Drawings

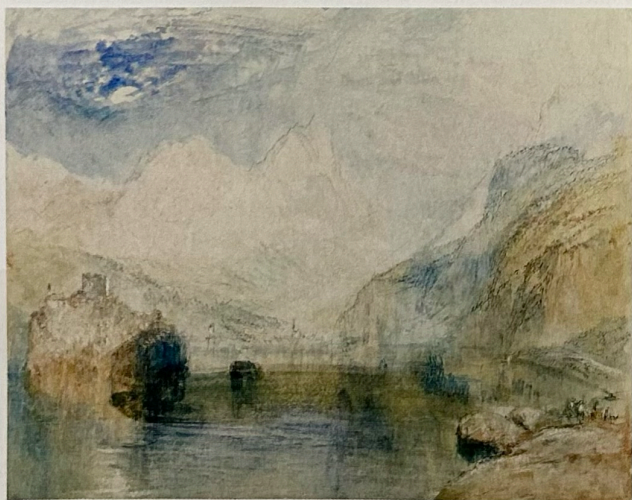
Among the works on offer at the Trois Crayons exhibition *Tracing Time* is one of Turner's views of the Italian Alps.

Offered by the London dealer Colnaghi Elliott Master Drawings, the watercolour from 1836 depicts the Brenva Glacier above Courmayeur in Val d'Aosta. Part of the Mont Blanc mountain range, the location was somewhat remote and Turner would have walked some distance to reach this spot.

It is priced in the region of £250,000-350,000.

*Tracing Time* is a selling exhibition dedicated to drawings and works on paper running at Frieze No 9 Cork Street from June 26 to July 5. It features over 35 international galleries with more than 250 works being exhibited, doubling in size since its debut show in 2024.

► [colnaghielliott.co.uk](http://colnaghielliott.co.uk)



**Above:** *The Lauerzersee with the Ruins of Schwanau and the Mythens*, a watercolour over an underdrawing in pencil, with pen and grey ink, with scratching out. Measuring 9 x 11¼in (23 x 29cm), it is priced in the region of £800,000 by Stephen Ongpin.

**Stephen Ongpin Fine Art**

Venice and Switzerland stand out as two of the most desirable locations for Turner paintings.

London dealer Stephen Ongpin is offering works of both settings at his *Two Centuries of British Drawings, Watercolours and Oil*

*Sketches* exhibition running from June 24-July 25. A depiction of the approach to Venice from the lagoon priced in the region of £500,000 is described as "a new and fascinating addition" to Turner's corpus of views of the Italian city. It is closely associated with a sketchbook used by the artist on the last of his three visits to the city in August 1840. He painted around 150 Venetian watercolours in total, with many today in museum collections. This was one of 20 works



**Above:** *Tent Lodge, Coniston Water, Lake District*, a 19¼in x 2ft 2in (50 x 65.5cm) watercolour heightened with touches of bodycolour. It has an asking price of £95,000 from Guy Peppiatt Fine Art.

## Guy Peppiatt Fine Art

Guy Peppiatt's exhibition of British drawings and watercolours running from June 23 to July 9 is part of *Classic Art London* and will feature a Turner watercolour of the Lake District as one of its highlights.

It depicts Tent Lodge at Coniston Water and was drawn for Walter Fawkes, the artist's best-known patron. Fawkes owned over 250 watercolours and several oils by Turner, the largest private collection of his work ever assembled.

The work is one of only a handful of finished pictures that emerged from Turner's visit to the Lakes in 1797 (the others include two oil paintings and a smaller scale composition that is now in the Tate). These works may well have been executed later based on sketches made during that trip.

The view here looks north-west across the top of Coniston Water toward Tent Lodge, a house which still stands today. The lodge has a notable artistic and literary heritage: Alfred Tennyson spent part of his honeymoon there in 1850 where he was visited by Matthew Arnold, Thomas Carlyle and Edward Lear. He composed *The Princess* at the Lodge.

Freely handled with extensive use of bodycolour, the painting is highly similar to another watercolour of Coniston Water in the Fitzwilliam Museum in Cambridge.

The work has been in a private collection and untraced since the 1960s; the asking price now is £95,000.

The dealer is also offering two other early works by Turner, one done in conjunction with Thomas Girtin (1775-1802). The sketch dating from 1795-96 belongs to a group of views of shipping at Dover copied by the two artists from the work of amateur John Henderson.

It was executed at the London home of Dr Thomas Monro in Adelphi Terrace who hosted young artists and encouraged them to copy drawings in his possession. According to the artist and diarist Joseph Farington, Girtin and Turner frequently collaborated with the former drawing the outlines before passing the sheet to Turner, who would bring it to life through watercolour washes, tints and tones.

This example is priced at £19,500.

► [peppiattfineart.co.uk](http://peppiattfineart.co.uk)

from a sketchbook where the artist focused on capturing the sea, sky and changing light of Venice mostly during stormy weather. They were later removed and sold to collectors by Turner's agent and dealer Thomas Griffith, probably after the artist's death, with at least six purchased by John Ruskin.

The Swiss view at the Ongpin exhibition depicts Lauerzersee (or Lake Lauerz) with the ruins of Schwanau. It was produced during Turner's final tours of the country in the early 1840s.

The remarkable watercolours he created on these trips, which were different to any he had done before, were again extracted from sketchbooks and sold by Griffith – with Ruskin and Hugh Munro of Novar being the main buyers.

In exceptional condition, this luminous example is priced in the region of £800,000.

► [stephenongpin.com](http://stephenongpin.com)